

New Volume 4 Edition 4

THE RANCOCAS CREEK ASSOCIATION

The New Creekside News



### The "New" Creekside News

is an e-newsletter for, about, and by the Rancocas Creek Association - free to all, published quarterly (**January, April, July, October**). The Creekside News was previously distributed weekly (1930's) to all residents free of charge - for the first copy - any additional copies were sold for 2 cents per copy!

Click to check us out on [Facebook](#) 

Or online at [www.rancocas creek.org](http://www.rancocas creek.org)

Support us on [Smile.Amazon.com](#)

Creekside News October 2020

## The Ornithologist Corner

*Jacob Poinsett  
Audubon Society*



### Gray Catbird

The meowing you heard may or may NOT be kittens roaming the forested creek bank. The Gray Catbird has fooled many folks with its cat-like meow (hence the name). Related to mockingbirds, the Gray Catbird also mimics the calls of other birds and noises it hears within its deciduous forest habitat. Primarily migratory in most of its range, we are lucky to have them as year-round residents in the State of New Jersey. More commonly heard than seen, they creep through thick understory looking for insects and fruit-bearing plants while blending into the shadows with their gray feathers and black cap. To try and entice some catbirds to stick around your neck of the woods, introduce dogwoods, elderberry, or serviceberry to your personal creek habitat to provide food and nesting sites.



Welcome to our newest members - Randi & Mike R and Anne & Richard W!

Check out our



on Facebook

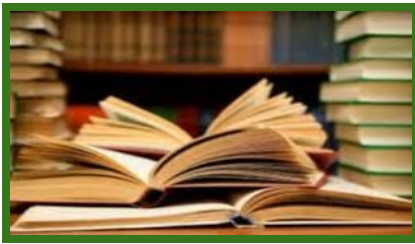
or you may have it emailed to you. (A copy automatically accompanies this newsletter if you are receiving via email.) A great source of gifts for the upcoming holidays? A Hugh Campbell original, a crystal vase, or even a canoe - scroll through and see what treasures await!

Auction goes from October 1 to October 31!  
Good Luck!





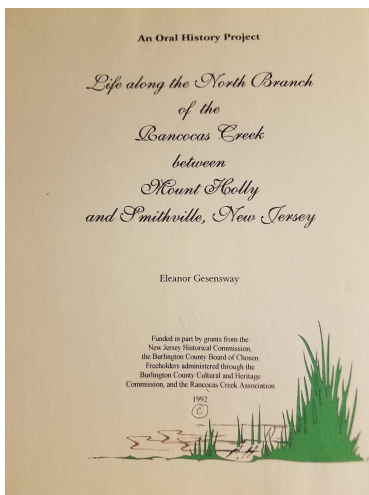
Photo courtesy of Anita  
Enjoying the beautiful Rancocas



### Ellie's Corner

*"To me it is important not to live in a throwaway society...that you respect what came before." Eleanor Gesensway.*

The banks of the Rancocas Creek has in its residents a remarkable membership of truly talented and interesting persons. Please enjoy another excerpt from Ellie's book - "An Oral History Project: Life Along the North Branch of the Rancocas Creek between Mount Holly and Smithville, New Jersey".



*Excerpts from the interview with Anna Mae Gottlieb.*

Anna Mae and James T. Gottlieb married in 1937 and moved to Mount Holly a year later. The Gottlieb Family owned the food market and butcher shop in Camden and young James was elected to open a store in Mount Holly on the corner of Mill and Pine. They lived on High Street for a while.

In 1940 they purchased the 20 acre creek property near Green Street because James was "an outdoor enthusiast and loved swimming". "He was just crazy about the creek and the things they could do there."

"...My aunt and uncle would come down. They would go to the Reading Terminal market [in Philadelphia] and get a basket of crabs and we would have a great big pot and have the fire set and put them all in there. We'd pull out a big, flat table and put newspapers on it and sit there and gorge ourselves on them until every piece was gone! [laughter] That was absolutely delicious. The best food you've ever eaten! [laughter] We had that and beer!"

Their son, Myron Gottlieb (*one of the youngest judges ever appointed to the New Jersey Bench*) "...swam in it (*the Rancocas Creek*); ...canoed in it." "To him, taking a girl out on the creek was a good date!"

"It was a beautiful, beautiful place....I have a picture of my husband paddling a canoe in the creek and I'm in the canoe as pregnant as anybody can be."

"There was a great tree...(e)verybody used that because we always used to keep a nice rope hanging from it. Everybody would walk up (if they canoed they had to be careful where they left the canoe or it would be in the way) and would swing from that tree. They must have felt like Tarzan. My

son would do that frequently."

"My brother-in-law ... had a cabin at the other end...past where the Hollyford Ice Co owned water and land. ... maybe it was called Innisfree. "

The Gottliebs loved the Island Store; stopping there for cold drinks or a sandwich.

Gottlieb spoke of local artist, High Campbell\*. "He used to come into the store to do his shopping... He bought and lived very meagerly. When he didn't have enough money he'd come down and sell some of his paintings... He was very fond of Jim and he used to visit him when he was sick.... He'd rather walk. Always the same, lugging all his stuff with him. He would carry the easel and carry his other stuff in a bag. He often painted right out on the street."

When asked why more Mount Holly people did not share in the interest of the creek, Gottlieb stated "...they missed a lot. They missed a tremendous amount."

The thing that resonates in all these stories is the strong love the residents have for the Rancocas Creek!

---

\*Check out the silent auction for a pen and ink from Hugh Campbell.

---



*Photo courtesy of Arlene and Teri*

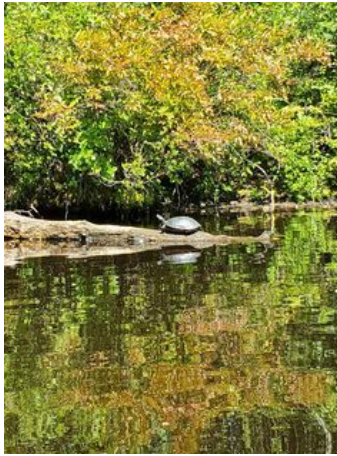
*Enjoying a beautiful sunny Sunday on the Rancocas Creek*



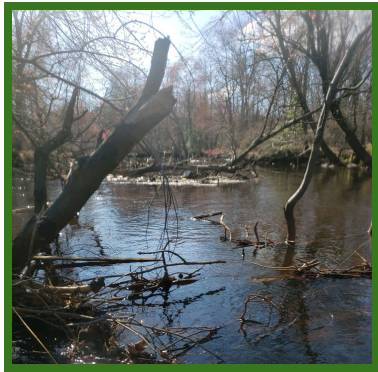
**Thank You** to Tom Greenfield, Chair of the Fundraising Committee. He did a brilliant job on our GoFundMe project. While that is still on-going, this month, we are adding a silent auction in the hopes that we will be able to raise enough funding to complete the tree removal and begin to address erosion. Please help if you can!

[https://charity.gofundme.com/o/en/campaign/tree-removal-fund?fbclid=IwAR10p6bU18YA2iKKlfPcsbgieLfDiBedi9zyL67z\\_bpquiaoV5-AlhppeFO](https://charity.gofundme.com/o/en/campaign/tree-removal-fund?fbclid=IwAR10p6bU18YA2iKKlfPcsbgieLfDiBedi9zyL67z_bpquiaoV5-AlhppeFO) or through PayPal ([rancocas@gmail.com](mailto:rancocas@gmail.com))

The Silent Auction is on Facebook, or may be emailed to you if you prefer.



*Photo courtesy of Robin and Tom  
Log Lounging on the Creek*



## Native Plants for our Region

Members of the Rancocas Creek Association have shown an interest in Native Plantings for our area; therefore, we have done some research and have included some of the more common natives for your review and perusal.

Here are some evergreens that have been hand-selected by Audubon experts for our region - there are more on their website!<sup>1</sup>

---

<sup>1</sup> "Native Plants" Audubon, [www.audubon.org/native-plants/search?zipcode=08060](http://www.audubon.org/native-plants/search?zipcode=08060).

## American Holly



Common names for this plant also include White, Prickly, or Christmas Holly. It is an upright, pyramidal, evergreen tree that slowly matures to a height of 30 feet, sometimes even 60 feet in warmer areas. It is the only native U.S. holly with spiny green leaves and bright red berries. These fruits are poisonous to humans but enjoyed by many bird and mammal species. American Holly can grow in full sun to shade, and in moist, well-drained, sandy and loamy soils.

## Eastern Hemlock



Also known as Canadian Hemlock and Hemlock Spruce this tall, perennial, evergreen tree attains a height of 40 to 70 feet (though very old trees may grow much larger) and a spread of 25 to 35 feet. It is more shade-tolerant than many evergreens and bears short, soft needles and pendant, half-inch-long cones. This tree cannot tolerate drought conditions, growing best in cool, moist, rocky soils.

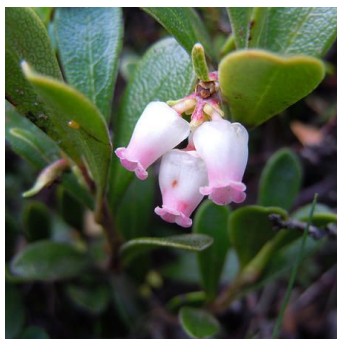
## Eastern Red Cedar



Also known as Virginia Juniper, Red Juniper, Pencil Cedar, Carolina Cedar, Red Savin, and Baton Rouge, this

evergreen, fragrant tree varies in color from gray-green to blue-green to light or dark green. It grows 30 to 40 feet tall typically, though it can reach up to 90 feet, with soft, silvery bark covering the single trunk. Growing in full sun to shade, and in dry soils, it is the most widely distributed eastern conifer, and is resistant to extremes of drought, heat, and cold. Pale blue fruits on female plants, combined with dense foliage make this plant excellent for birds.

## Red Bearberry



Also known as Kinnikinnick and Pinemat Manzanita, it is a mat-forming, evergreen shrub that grows 6 to 12 inches tall and up to 6 feet wide. In

the spring, it produces lovely white and pink, bell-shaped flowers that later turn into red berries. True to its name, the fruits of

this plant are enjoyed by bears, as well as birds and other wildlife. It can grow in full sun to shade, and in dry to moist rocky or sandy, acid soils.

---

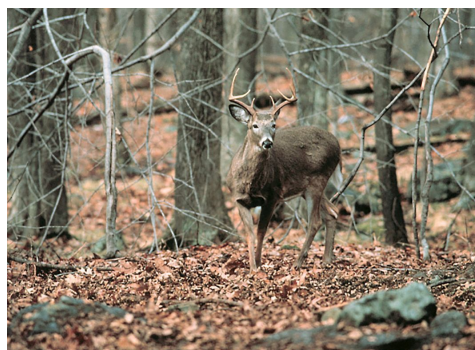
## RCA Creek Maintenance

The Rancocas Creek Association is very grateful to our youth volunteers, Mason and Royce, for the diligent work they continue to put forth regarding our creek maintenance.

The RCA will be sponsoring a training on Stream Visual Assessment Protocol (SVAP) for its volunteers. This assessment protocol provides a basic level of stream health evaluation and is the first level in a four-part hierarchy of assessment protocols. It provides an assessment based primarily on physical conditions within the assessment area.

---

## EHD and Deer



The **New Jersey Division of Fish and Wildlife** is asking the public to be alert for deer that may be affected by Epizootic Hemorrhagic Disease (EHD) and to report any suspected cases. Outbreaks in New Jersey typically occur in August through October. EHD cannot be transmitted to people.

Symptoms include: difficulty standing,

Creekside News October 2020

drooling, lethargy, respiratory distress, foam from the mouth or nose, and swelling of the face, tongue and neck. Sick or dead deer are often seen in or near water.

Reports can be made to:

Northern Region: 609-259-6965

Southern Region: 609-748-2065

Division Veterinarian: 908-735-6398

More info:

[www.njfishandwildlife.com/news/2020/ehd\\_alert20.htm](http://www.njfishandwildlife.com/news/2020/ehd_alert20.htm)

#NewJerseyFishAndWildlife #Deer

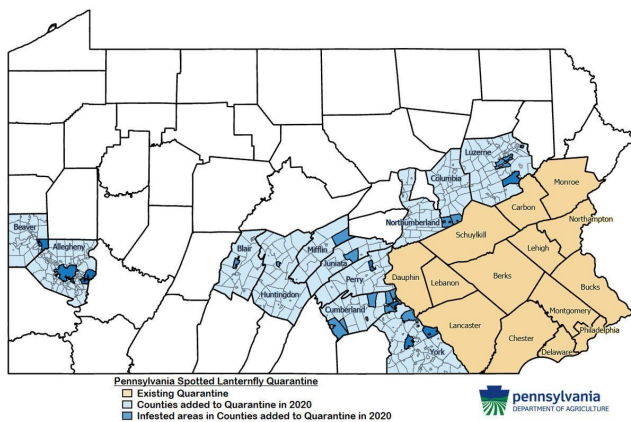


Frequently asked questions regarding this pest may be seen at <https://extension.psu.edu/spotted-lanternfly-frequently-asked-questions>.

Examples:

## Spotted Lanternfly

The Spotted Lanternfly is now found in New Jersey, Pennsylvania, Maryland, Delaware, Virginia, and West Virginia. Burlington County no longer has to report sightings.



The spotted lanternfly is an invasive planthopper (a type of insect) in the U.S. It is native to certain parts of Southeast Asia.

Q. Are they a threat here?

A. Spotted lanternflies feed on the sap of a plant and when there are high populations of them, they can cause significant damage. They feed on over 70+ plants, including important forestry and agricultural crops. Spotted lanternfly was first discovered in the United States in Berks County, PA in 2014. It has since spread throughout 13 counties in southeastern Pennsylvania, which the Pennsylvania Department of Agriculture has designated as a spotted lanternfly quarantine zone. In 2017, spotted lanternfly was also found in Frederick County in Virginia. In 2018, three New Jersey counties (Mercer, Warren, and Hunterdon) were quarantined for spotted lanternfly.

Q. I think I killed/caught a spotted lanternfly — what do I do with it now?

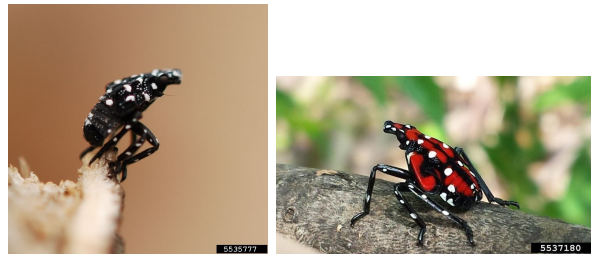
A. If you find a spotted lanternfly or a suspicious looking egg mass in a municipality where it is not known to exist,

you should try to collect it and put it into a container filled with alcohol (rubbing alcohol, hand sanitizer, etc.) to kill and preserve it, or at least take a good picture of it. Report your sighting online to the Pennsylvania Department of Agriculture or call Penn State Extension at 1-888-4BADFLY (1-888-422-3359). Your discovery could add additional municipalities to the quarantined area. If you find any life stage of spotted lanternfly in a municipality where it is already known to exist, you should try to destroy it.

**Q.** Can I prevent spotted lanternflies from getting on my property?

**A.** The best thing any property owner can do is become informed about spotted lanternflies. By becoming informed, property owners can choose to remove and/or treat the Ailanthus (tree-of-heaven) trees on their properties, which attract the insects. In addition, property owners can reference our Spotted Lanternfly Management for Homeowners guide for using contact pesticides and treatments on a variety of trees and plants.

Tree of heaven



Nymphs

For more information on management of this pest -

<https://extension.psu.edu/spotted-lanternfly-management-and-pesticide-safety>

and recommended homeowner treatments -

<https://www.nj.gov/agriculture/divisions/pi/pdf/SLFHomeownerTreatmentRecs.pdf>

Mating and egg laying is delayed and egg laying does not occur until October. Egg masses are laid on smooth surfaces and appear like a patch of mud. They spend the winter in this stage and thus are very likely to be accidentally transported to a new location.

Egg mass





## RCA SUNSHINE



Birthday Greetings and Happy Anniversary to our members celebrating in October, November, and December! Continued good health and happiness to each of you.

---

## RCA OUTREACH

The Rancocas Creek Association, in an effort to connect our organization's ideas or endeavors to the public focused on educational initiatives in our community. We did seminars on Rain Gardens, Native plantings, and Birds of Prey to name a few.

While the Coronavirus pandemic had curtailed that somewhat, we were able to offer a few events on-line.

Check back next year to see what we will have for you!



The RCA has a long history. - from 1934! It was originally a "camper's association", formed by families summering along the creek.

The Covid-19 has really made an impact on every aspect of our life! Did you know that the Burlington County Farm Fair, which has been going on since 1847, only took a break for the Great Depression and WW II - and now for Covid... Although it was originally called The Great Mount Holly Fair (and the RCA was a participant!), it has evolved to our beloved Burlington County Farm Fair through the years. It went from taking place in October and eventually became the huge July event in current history.

1847 - The Farm Fair was a one-day event held at the County Courthouse in Mount Holly for 9 years. Entry was 25-cents for an adult in 1850.

1856 - The Farm Fair was relocated to the Fairgrounds Plaza where the Acme is now. There was a ½ mile racetrack as a part of the 24-acre grounds.

1870 - The Burlington County Farm Fair Association is incorporated.

1887 - An incredible grandstand was built and drew many people to view the awesome event. Some visitors included Woodrow Wilson, 28th President and James Sherman, Vice President under William Howard Taft, 27th President.

In the ensuing years, many upgrades and improvements were made to make this an event that continued to attract visitors from far and wide.

1926 - The Great Depression and bad weather brought a halt to this event for about 20 years.

1946 - The Farm Fair is back - but it is only a one-day event as in its infancy. It is now held in Juliustown.

1947 - For 2 years, the Fair is held in Medford.

1949 - The Fair is now held in Burlington and is a 2-day event. It is now officially known as the Burlington County Farm Fair.

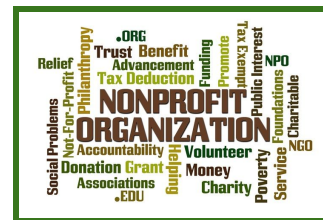
1959 - The Village Green in Lumberton is now home to the Farm Fair. The event is a 4-day celebration with 4H clubs, Granges, Agricultural and Farm representation.

2011 - The Burlington County Fairgrounds is the home to our Farm Fair, now a 5-day event.

2020 - A sad time in the history of our Fair - there is a halt due to the Covid-19 Pandemic.

Here is hoping that the 2021 Farm Fair takes place!

Take a trip to the Burlington County Lyceum of History and Natural Sciences to learn more about the exciting history of not only the Farm Fair, but of so much more that has happened in our backyards!



The RCA is a non-profit organization.

Tax deductible donations may be forwarded to RCA at 3 Birch Avenue, Mount Holly NJ 08060;

OR you may donate through Facebook;

OR you may identify Rancocas Creek Association as your charity of choice when purchasing through **Amazon Smile ([smile.amazon.com](https://smile.amazon.com))**; Amazon Smile now works on your Amazon app! RCA will receive 0.5% of your purchase courtesy of the vendor;

OR you may use PayPal - [rancocas@gmail.com](mailto:rancocas@gmail.com) is our identifier.

So many options!

## RCA GIVES BACK TO THE COMMUNITY

### VIRTUAL FOOD DRIVE

The easiest way to help the most people, right from your computer!

*Rancocas Paddlers*, sponsored by the RCA, has a fundraising page for the **Food Bank of South Jersey**. We are helping to raise funding to help fight hunger in South Jersey. You are invited to join us at <https://donate.foodbanksj.org/team/296015> to help our neighbors. Thank you!

---



### HELP WANTED!!!!

We are looking for GRANT WRITERS!!!

Anyone love to play on FaceBook? Social Media authors are needed!

Enjoy digging through archives? We are looking for someone to go to the library and download old copies of newsletters.

Please let the President know if you would be willing and able to volunteer your time - thank you!

Welcome and thank you to our intern, Tim P, who will be helping with some administrative work this fall.



### 2020 Meeting Schedule

*10:30 am - refreshments*

*11:00 am - meeting*

*Noon - adjourn*

Sunday, April 26 - Astorinos (virtual)

Sunday, May 24 - Virtual

Saturday, June 20 - Virtual

Sunday, July 12 - Virtual

Sunday, August 9 - Virtual

Sunday, September 13 (Nominations)

Virtual

Sunday, October 11 "Potluck" (Elections)

Virtual

Sunday, November 8 Support-Local Gathering

Sunday, December 13 Winter Gathering

Venue to be finalized.

## Dues



Dues remain at \$20 per household! Please forward your dues to our Treasurer, Gary Pollak at 3 Birch Avenue, Mount Holly NJ 08060.

You may also pay through PayPal (\$20.74) - please email us at [Rancocas@gmail.com](mailto:Rancocas@gmail.com) to ensure you are credited with the membership!

---

## Our Newsletter

Anyone interested in writing an article for our newsletter, or have news that they would like to share, should contact Sharon Astorino or Claudia McNamara at [Rancocas@gmail.com](mailto:Rancocas@gmail.com).

***For those of you who read this newsletter and are not members of the RCA, we would like to tell you what it is! The Rancocas Creek Association is residents' association for people who live on or near the Creek between the Smithville Spillway and the Mount Holly Dam, or who enjoy paddling along the creek. We are a non-profit organization. Although RCA is not primarily an environmental organization, our location and relationship to the Creek means that many issues that we take up on behalf of residents have to do with preserving the quality of the environment and ecology of the Creek.***

## ***We welcome new members!***

The more subscribed members we have, the stronger our voice to protect our environment and neighborhood and the quality of all lives along it. Dues are \$20 per year per household - not a high price to support an association that looks out for our small community and is also a source of information about local activities and development. So come on in! Join up and be part of this not-for-profit neighborhood association!

The 3 "M"s that make the Rancocas Creek "go"!

**Membership** - Encouraging friends and neighbors to join - \$20/year/household - the larger the membership, the stronger the voice!

**Mailings** - A newsletter geared to the membership is produced quarterly. We try to limit emails to a minimum!

**Meetings** - A minimum of 8 meetings per year; the third Sunday or Saturday of the month is preceded by coffee and refreshments, although lately they have all been virtual! Some meetings have speakers and run a little over the usual one hour.

The RCA has over *85 years of history*; formed by people summering along the beautiful Rancocas. The creek-side cabins were summer camps for families from Camden, Philadelphia, and other surrounding towns. RCA has had its ups and downs, some years with vigorous activity, others being barely active. RCA was instrumental in requiring the landfill to respond to health issues, paying for city water along Shreve Street, Kates Tract, and Paducah Road. Our main goal; however, is

Creekside News October 2020

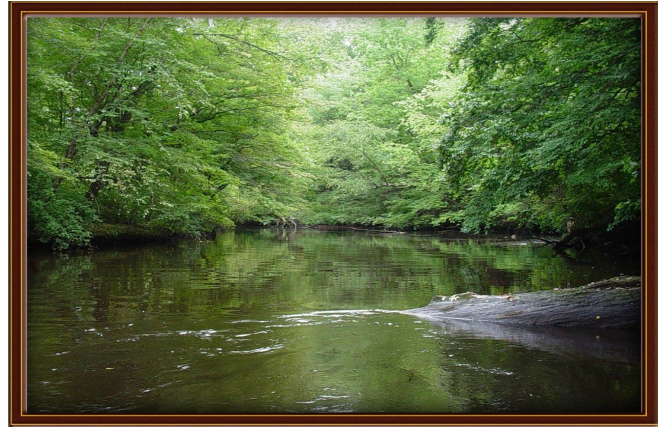
to maintain the beauty and health of the Rancocas Creek.

Consider joining us, and/or contributing to have some of the large trees removed through

<https://charity.gofundme.com/.../cam.../tree-removal-fund...>

or through PayPal using [rancocas@gmail.com](mailto:rancocas@gmail.com) as the identifier.

New members, simply mail your dues along with your name, address, email and telephone number to RCA, 3 Birch Avenue, Mount Holly NJ 08060. We look forward to hearing from you and working together for a beautiful, clean creek!



### Like us on Facebook!



<b>President:</b>	Sharon Astorino
<b>Vice President:</b>	Richard Astorino
<b>Secretaries:</b>	Judy Loane Claudia McNamara
<b>Treasurer:</b>	Gary Pollak
<b>Parliamentarian:</b>	Kerry Sharps
<b>Editors:</b>	Sharon Astorino Claudia McNamara Morgan Astorino
<b>Webmaster:</b>	Kerry Sharps
<b>Fundraising:</b>	Tom Greenfield
<b>Creek Liaisons:</b>	Paul Loane Claudia McNamara