

New Volume 3 Edition 3  
THE RANCOCAS CREEK  
ASSOCIATION

The New Creekside News



**The "New" Creekside News** is an e-newsletter for, about, and by the Rancocas Creek Association - free to all, published quarterly (**January, April, July, October**). The Creekside News was previously distributed weekly (1930's) to all residents free of charge - for the first copy - any additional copies were sold for 2 cents per copy!

Click to check us out on [Facebook](#)   
Or online at [www.rancocas creek.org](http://www.rancocas creek.org)  
Support us on [Smile.Amazon.com](http://Smile.Amazon.com)

Creekside News July 2019

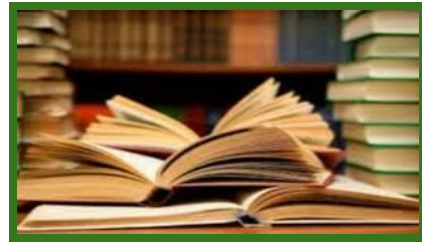
## The Ornithologist Corner

Contributed by Ranger Jacob



### White Breasted Nuthatch

A small songbird found throughout North American forests, the White-breasted Nuthatch seems to scale the towering trees along the Rancocas Creek effortlessly. Being a passerine, they have feet for perching. But their hind toe is much longer and sits completely opposite as their three front toes. This allows the White-breasted Nuthatch, and all other nuthatches, to climb tree bark up and down and side to side looking for insects while balancing like a gymnast with ease. Although they're primarily insectivores, they will visit bird feeders to forage for sunflower seeds, peanuts, and a variety of suet. They've even been known to stash their bird-feeder-findings for later! This small charismatic bird will use abandoned woodpecker cavities and natural tree cavities for their nesting sites, so if you have a "snag" not too far from your house, be sure to leave it up to attract some adorable new neighbors.



### Ellie's Corner

*"To me it is important not to live in a throwaway society...that you respect what came before." Eleanor Gesensway.*

The banks of the Rancocas Creek has in its residents a remarkable membership of truly talented and interesting persons. Please enjoy another excerpt from Ellie's book - "An Oral History Project: Life Along the North Branch of the Rancocas Creek between Mount Holly and Smithville, New Jersey".

Helen Ferguson lived at "Rendezvous" on Kates Tract. A 33-year resident of Mount Holly, Ms. Ferguson's first impression of the Creek was that "it was something I'd never experienced before. There was a group of kind of shabby cottages...(no) running water in any of them..." Helen and her husband, Paul, decided they loved the place and fell in love with their cottage. Upon Paul's retirement from the Philadelphia Orchestra in 1977, they became full-time residents.

"It was a great place to have kids for the summer. They had camp life without any restrictions." "They were free to roam, swim, have sing-songs and readings around campfires." "It was not just one family...one night it would be at the Katz's, and then at the Traceys, then the Gesensways, the Fergusons, and the Farners." The children "all learned to canoe..." If they wanted to go to the movies, they canoed into town." "The Mt. Holly movie was on High Street in the

Creekside News July 2019

middle of the block before it moved to Washington Street."

The adults "also used the canoe to go into town to shop. There was a small vegetable store on Mill Street and a small butcher shop on Main Street where the music store or the newsstand is now."

"...During the wintertime..when the pond was frozen, we ice skated." "The pond was deep enough to paddle the canoe around. Right in front of Shady Nook it was 2' deep ...and further out to 4' deep."

"We had electricity here in 1946, but we had an ice box, not a refrigerator....the ice truck came down here and Dugan's bread man..."

The rent in the 1940's was \$200/year.

"For the first 5 years we were here, there were no herons...since 1952, I've noticed they arrive every year the 26th of July." There are different birds here now than there were when the Fergusons first moved in.

"I've always loved nature. It gives me great satisfaction to live here and be able to enjoy and appreciate the beauty of it and what God gave us - not in a religious sense. When you are here and appreciate the surroundings of the trees and the water and the sky, then material things become far less important. The birds and the garden make life so much more enjoyable."

### A Blast from the Past!



Yes! This young Whipper-snapper is our own Craig Katz in the 1980's!

---

### Smithville History Fun Day

The Smithville History Fun Day, presented by the Burlington County Board of Freeholders and the Friends of the Mansion, was held on May 19, 2019.

Thanks to Richard & Sharon Astorino; Craig & Hana Katz; Karen Harkaway & Michael Grace; and Jodi Beth and Michael Mallon for hosting our booth for the day!

There were local artisans, historical societies, music, food, and lots of fun for all.

RCA appreciates the support of all those that visited our booth! We do live in a most beautiful and historic part of the state!





The RCA Booth



Working with Iron - an historic trade for Smithville



Serenading Under the Tent



Serenading on the porch





**Carriage Rides**



**Bicycles of all sizes - this is what Smithville is known for - check out the museum!**

## Earth Fair

Thanks to Richard & Sharon Astorino; Craig Katz; Jenna Champion, Gary & Talulla Pollak for hosting our booth for the day!

The May 19th Earth Fair was packed with lots of very interesting information. It is difficult to capture all in our newsletter - but here is an attempt!

[www.cleanwaterNJ.org](http://www.cleanwaterNJ.org) - What's the problem with litter? Why should you care about clean water? Bottom line - more than 60% of water pollution comes from things such as motor oil, fertilizers, pet waste, and detergents.

[www.arboday.org](http://www.arboday.org) - encouraged the planting of trees to help fight the greenhouse effect.

The Mount Holly Environmental Advisory Committee was on hand - the conflict between trees and sidewalks - alternatives to concrete sidewalks.

[www.njisst.org](http://www.njisst.org) - the New Jersey Invasive Species Strike Team was on hand to discuss replacing invasives with native plants. Invasive plants damage our ecosystem.

And can we say enough about Cousins Maine Lobster?! Their food truck had the longest lines - the lobster mac and cheese - to die for! [www.cousinsmainelobster.com](http://www.cousinsmainelobster.com)

Copies of some few recycling handouts from Burlington County are attached for your convenience and perusal.

Thank you for supporting this environmentally conscious and educational, FUN day! This wonderful, FREE, function was sponsored by the Burlington County Board of Freeholders



Birthday Greetings to Judy Loane, Fred Poinsett, John McNamara, Gary Pollak, Morgan Astorino, and Teri Montgomery!!

Please let Sharon know your birth months so that you are included in our well wishes!

---



The RCA has a long history. - from 1934! It was originally a "camper's association", formed by families summering along the creek.

This year we are doing a concerted effort to get substantial work efforts going to solidify our beautiful environment. A major endeavor is mapping our beautiful section of the creek - news shall follow regarding the progress.

Navigable waters are property of the state, the creek bottom may remain private property; however, depending on where a stream or river lies. If it was merely a seasonal creek or storm runoff, it is likely

not considered a navigable water and is likely private property. Check your deed to see where your property ends along the creek.

---

## Update on the Smithville Bridge



As of July 12, 2019: Deputy Director Balvir Singh said work on the bridge railings is still not finished but that the county has reached an agreement with the contractor to complete the project 'soon'. He was reluctant to release a new target date because so many of the previous deadlines were missed.

The Wednesday, July 10th Burlington County Freeholder meeting brought forth acknowledgment that the previous mid-June re-opening date for the bridge that had been closed since January 2017, was missed and that the bridge project still isn't completed.

The first known delay was due to a flaw in the bridge design that wasn't discovered until construction began. More delays followed involving both the concrete on the span and the railings (they were painted a color that did not match the hue mandated by the state Historic Preservation Office).

The replacement project was anticipated to

Creekside News July 2019



cost \$4.8 million and was being paid for largely with state and federal grant funding. The Freeholders then approved a \$628,273 change order in its construction contract to cover additional expenses for the bridge and the first design flaw, which was traced to work performed by Dewberry.,

A resident near the bridge spoke during the meeting and complained that the seemingly never-ending work has been a huge problem for area residents.

Let's hope that this saga ends and our bridge reopens quickly..

---

## Country Haven Kennel and Dog Park

Country Haven Kennels & Dog Park is a dog haven nestled away by Smithville Park in Eastampton. They provide the highest quality of care and maintain a clean & secure facility. It is owned and staffed by people who really love dogs and cater to dog owners that need help with training their pets as well as daycare and puppy pre-school.

The owner, Casey Crotchfelt, has been an animal lover all her life, and it shows in the love and quality of care she gives her guests. Casey studied dog training and behavior and has volunteered for many dog programs.



## Oh Such A Dilemma!



What a dilemma!!

This production was most enjoyable - shenanigans galore! And not what you would expect - if you are lucky enough to attend a show, please let us know what you think - we can have a discussion after June so that we don't give any surprises away!

Our very own Lord Kerry Sharps was front and center from April 19 to June 8; Tom Greenfield was the major behind the scenes guy!

Do try to go out and support the Mill Race Theatrical Company - their next even is The Theater of Fear!!!



Be amazed and share in the most

Creekside News July 2019

sensational event of the Halloween season with Theater of Fear, a new original show developed by The Mill Race Theatrical Company exclusively for their immersive Mount Holly theater. Featuring wrap-around scenery, virtual projections, and environmental effects, the audience will be right in the middle of three hair-raising stories:

- See love turned to terror in The Lighthouse Keepers!
- Behold the world-class excitement of Doctor Stubs the Amazing Chainsaw Magician!
- Question your sanity as Tillinghast's machine summons eldritch creatures From Beyond!

See you there!! BOO!



The RCA is a non-profit organization.

Tax deductible donations may be forwarded to RCA at 36 West Railroad Avenue, Eastampton NJ 08060,

OR you may donate through Facebook,

OR you may identify Rancocas Creek Association as your charity of choice when purchasing through **Amazon Smile** ([smile.amazon.com](https://smile.amazon.com)). RCA will receive 0.5% of your purchase courtesy of the vendor.

So many options!



We are looking for GRANT WRITERS!!!

Anyone love to play on FaceBook?

Please let the President know if you would be willing and able to volunteer your time - thank you!

## New Chair of the Pinelands Commission

The Governor has appointed Commissioner Richard H. Prickett to serve as Chair of the Pinelands Commission, the agency charged with overseeing conservation and growth in the Pinelands National Reserve, a 1.1 million-acre area of protected wilderness in southern New Jersey.

Rick Prickett has spent decades as a teacher, local elected official, advocate, and member of the Pinelands Commission helping others understand what a wonderful resource we have in the Pinelands, and how important it is that we all pitch in to protect this unique part of New Jersey's natural heritage.

He is a naturalist knowledge of Pinelands ecology and insightful regarding important

Creekside News July 2019



policy and development issues coming before the Commission.

## The Mosquito Commission

Pamphlets were distributed at the June RCA meeting. The Mosquito Commission stated that they still spray along the river. The representative stated that the inspectors treat the area by hand every day and fly the helicopter every now and then. As the largest county in New Jersey, there are large areas that have the potential to breed mosquitos - and the creek is certainly one of those areas. For more information, please visit [www.co.burlington.nj.us/mosquitocontrol](http://www.co.burlington.nj.us/mosquitocontrol).

Mosquito Dunks and Mosquito Bits are available through Amazon (and if Smile.Amazon is used, it benefits RCA!) as well as pet and feed stores. Homeowners should take care to dispose of tin cans, plastic containers, ceramic pots, etc, that can accumulate water.



## The Mount Holly Farmers Market



Thursday, June 13th was the opening day of the Mount Holly Farmers Market at the corner of Washington and High Streets. It is just across from the entrance to the Mill Race Shops, in the heart of Mount Holly's active and charming downtown. Come and support this new venture and purchase Jersey Fresh fruits and vegetables, pastured heirloom beef, pork, chicken, and eggs, bedding plants, hanging baskets, cut flowers, local honey and cheese. It will even be a place to pick up your locally caught seafood by advance order. All that goodness plus live music, hand-made crafts and art, cooking demonstrations by Rowan College at Burlington County, coffee roasters, the list goes on. The Market is open Thursdays from 3:00 pm until 7:00 pm until October 10, 2019. See you there!



## 2019 Meeting Schedule

*10:30 am - refreshments*

*11:00 am - meeting*

*Noon - adjourn*

Sunday, July 21 - Katz

Sunday, August 17 - Loanes

Sunday, September 14 - Katz

Fall Get Together - Robins Nest

Sunday, October 20 Potluck -

McNamara

December Gala - Harkaway/Grace

You will note that we have added Saturdays to our line-up! Many of our members had stated that Sundays were becoming difficult; therefore, we have added two Saturdays to see if this will assist with scheduling. We hope this helps!

The membership has voted to add a Fall Get Together at the end of September and a December holiday gathering. Dates to be determined!

## Dues



Dues remain at \$20 per household! Please forward your dues to our Treasurer, Tom Kempton.

You may mail them to the RCA at 36 West Railroad Avenue, Eastampton NJ 08060.

---

## Our Newsletter

Anyone interested in writing an article for our newsletter, or have news that they would like to share, should contact Sharon Astorino, Teri Montgomery, or Claudia McNamara. You may use our personal emails or our WebMaster will forward mail to us that is sent to [Rancocas@gmail.com](mailto:Rancocas@gmail.com).

***For those of you who read this newsletter and are not members of the RCA, we would like to tell you what it is! The Rancocas Creek Association is resident's association for people who live on or near the Creek between the Smithville Spillway and the Mount Holly Dam. We are a non-profit organization. Although RCA is not primarily an environmental organization, our location and relationship to the Creek means that many issues that we take up on behalf of residents have to do with preserving the quality of the***

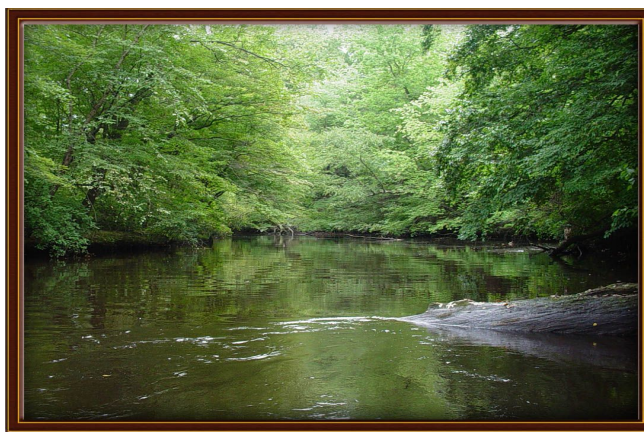
Creekside News July 2019

***environment and ecology of the Creek.***

We welcome new members!

The more subscribed members we have, the stronger our voice to protect our environment and neighborhood and the quality of all lives along it. Dues are \$20 per year per household - not a high price to support an association that looks out for our small community and is also a source of information about local activities and development. So come on in! Join up and be part of this not-for-profit neighborhood association!

To join, simply mail your dues along with your name, address, email and telephone number to RCA at 36 West Railroad Avenue, Eastampton NJ 08060. We look forward to hearing from you and working together for a beautiful, clean creek!

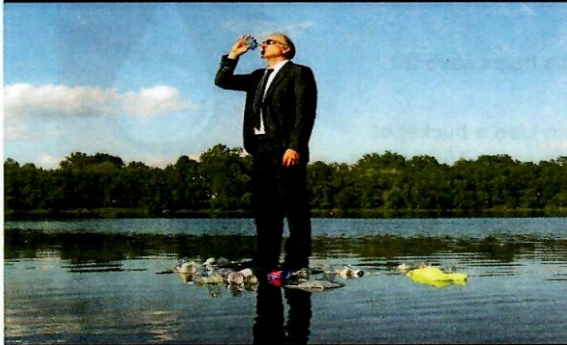


- |                         |  |
|-------------------------|--|
| <b>President:</b>       | Sharon Astorino  |
| <b>Vice President:</b>  | Richard Astorino                                       |
| <b>Secretaries:</b>     | Judy Loane<br>Claudia McNamara                         |
| <b>Treasurer:</b>       | Tom Kempton  |
| <b>Parliamentarian:</b> | Kerry Sharps   |
| <b>Editors:</b>         | Sharon Astorino<br>Claudia McNamara<br>Teri Montgomery |
| <b>Webmaster:</b>       | Kerry Sharps   |



WATER IS IMPORTANT FOR EVERYONE

**IF YOU LITTER  
IN THE STREET,  
YOU MIGHT AS WELL  
LITTER IN THE RIVER.**



**Rain washes pollutants into storm drains  
and directly into our lakes,  
rivers and the ocean.  
So what can you do?**



[www.cleanwaterNJ.org](http://www.cleanwaterNJ.org)

**WHAT'S THE PROBLEM WITH LITTER?**

When was the last time you saw someone littering? Litter just doesn't appear — it's the result of careless actions. No matter where litter is discarded, it usually ends up in the street, where it washes down storm drains and ultimately flows to local waterways. Littering is not only unsightly, it's a threat to wildlife and their habitat. Before you flick a cigarette butt out of your window or throw out a plastic bottle, consider this: Cigarette filters have been found in the stomachs of marine life, birds, and other animals, because they thought it was food. Birds and marine life have also been found trapped or tangled in plastic items such as six-pack drink holders, plastic bags and fishing line. Please be considerate, and protect our wildlife and our water.

**YOU CAN HELP!**

- Set an example for others, especially children, by not littering.
- Carry a litterbag in your car.
- Make sure trash cans have lids that can be securely fastened.
- If you have curbside trash collection, don't put loose trash in boxes.
- Prevent trash cans from being knocked over by the wind and animals.
- Tie papers in a bundle before placing them in a curbside recycling bin.
- If you own a business, check dumpsters daily to see that top and side doors are closed.
- If you or a family member is involved in a civic group, scouting, or recreational sports program, encourage the group to "adopt" a spot in your town and maintain it on a regular basis.
- Report areas where people have illegally dumped garbage and debris and ask that the material be removed.
- Volunteer to help organize a cleanup.

**WHY SHOULD YOU CARE ABOUT CLEAN WATER?**

Stormwater pollution is one of the greatest threats to New Jersey's clean water supply. Clean water provides access to safe drinking water, places for recreation, commercial opportunities, healthy wildlife habitats, and adds beauty to our landscape. Rain washes pollution from streets, parking lots, and lawns into storm drains, then directly to our streams, rivers, lakes and the ocean.

**Did you know more than 60 percent of water pollution comes from things such as motor oil, fertilizers, pet waste and detergents? By sharing the responsibility and making small, easy changes in our daily lives, we can keep common pollutants out of stormwater.**



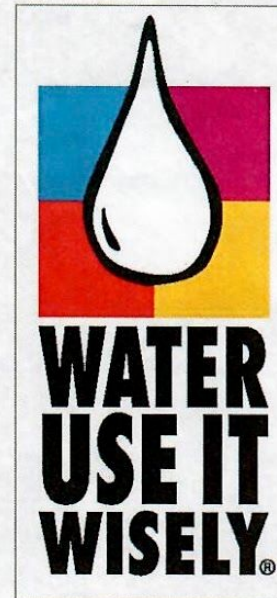
Thanks to the Washington State Department of Ecology, King County, and the cities of Bellevue, Seattle and Tacoma.

## WATER IS IMPORTANT FOR EVERYONE

### HELP CONSERVE AND PROTECT IT BY BEING WATER-WISE AND LITTER-FREE

#### TOP ELEVEN WATER CONSERVATION TIPS

1. Water your lawn only when needed. Step on your grass. If it springs back when you lift your foot, it doesn't need watering. So set your sprinklers to increase days between watering. This helps save 750 to 1,500 gallons per month. Better yet, especially during drought conditions, water with a hose.
2. Fix leaky faucets and plumbing joints. This helps save 20 gallons per day for every stopped leak.
3. Don't run the hose while washing your car. Use a bucket of water and a quick hose rinse at the end. This saves 150 gallons each time. For a two-car family that's up to 1,200 gallons a month.
4. Install water-saving shower heads or flow restrictors and save 500 to 800 gallons of water per month.
5. Wash only full loads in the washing machine and dishwasher. This saves 300 to 800 gallons per month.
6. Shorten your showers. Even a one or two-minute reduction can save up to 700 gallons per month.
7. Use a broom instead of a hose to clean driveways and sidewalks. This saves 150 gallons or more each time. Done once a week, the savings can equal more than 600 gallons a month.
8. Don't use your toilet as an ashtray or wastebasket. This saves 400 to 600 gallons per month.
9. Capture tap water. While you wait for hot water, catch the flow in a watering can to use later on house plants or your garden. You could save 200 to 300 gallons per month.
10. Don't water the sidewalks, driveway or gutter. Adjust your sprinklers so that water lands on your lawn or garden where it belongs - and only there. This can save an estimated 500 gallons per month.
11. Capture storm water runoff with a rain barrel and use it to water your lawn and garden. This will save 50 gallons each time you empty one barrel to water plants.





# PLASTIC CONTAINERS WE RECYCLE:



## BOTTLES & FOOD CONTAINERS

Common #1 & #2 food containers include clear berry boxes, prepared food containers, fresh produce containers and clear plastic egg cartons.



## POLYPROPYLENE FOOD CONTAINERS

Common #5 food containers include yogurt cups, sour cream, baby wipe boxes and most take-out food containers (like Wonton soup).



## IMPORTANT – We cannot recycle some plastic containers/items.

Why? Either there are no responsible markets or our recycling system can't properly sort the item.

**So, no matter what recycling symbol is on the item, our program cannot recycle: loose caps, any lids, drink cups, pill bottles, plastic wrap, bags, toys, flower pots or flat plastic trays.**

Use this flyer as a guide and ONLY recycle items that are similar to the images shown above.



## PLEASE RINSE CONTAINERS CLEAN BEFORE RECYCLING!

The markets for other numbers (#3, #4, #6 & #7) are very unstable. It does not help the planet by collecting items that we cannot truly recycle.

Questions? Visit the county website or email us [recycle@co.burlington.nj.us](mailto:recycle@co.burlington.nj.us)



# Household Battery Recycling 101

The two main types of household batteries are *alkaline* and *rechargeable*.



**Alkaline Batteries  
DO NOT RECYCLE**



**Alkaline batteries** come in AAA, AA, C, D, and 9 Volt sizes. They do not contain mercury. *Put them in your household trash.*

**Rechargeable batteries** come in the same sizes as alkaline batteries, but also include batteries used for laptops, portable tools and toys. Rechargeable batteries include Nickel Cadmium (Ni-Cd), Lithium Ion (Li-Ion) and Small Sealed Lead Acid (SSLA/Pb) batteries. *Recycle these at Home Depot, Lowes, Staples and other locations listed at [www.Call2Recycle.org](http://www.Call2Recycle.org).*



**Rechargeable Batteries  
RECYCLE AT  
PARTICIPATING  
STORES**

**NEVER put batteries in your recycling! Batteries have caused fires at our recycling center!**



**What about PLASTIC LIDS?  
PUT ALL LIDS  
IN THE TRASH**



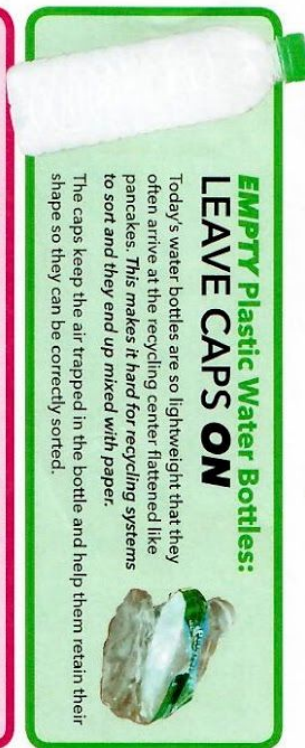
**When in doubt, LEAVE CAPS OFF!**



**EMPTY Sturdy Plastic Bottles:  
LEAVE CAPS OFF**

Plastic bottles are compressed into 1200 lb. blocks called "bales" for shipment to market.

Sturdy bottles, such as detergent or large soda bottles can't be compressed if caps are left on. This may cause the bands that hold the blocks together to snap and the bale to break open.



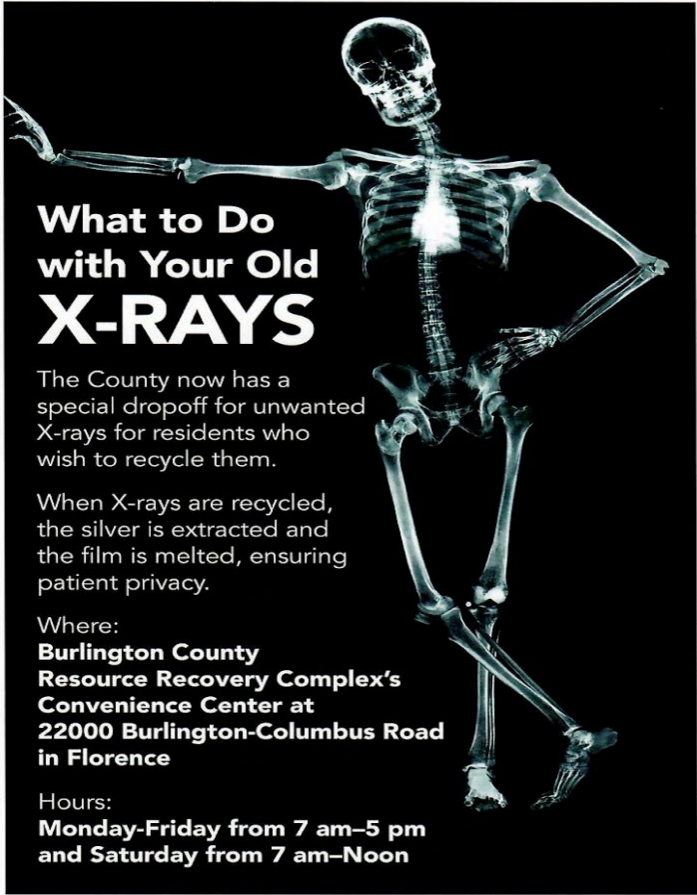
**EMPTY Plastic Water Bottles:  
LEAVE CAPS ON**

Today's water bottles are so lightweight that they often arrive at the recycling center flattened like pancakes. This makes it hard for recycling systems to sort and they end up mixed with paper. The caps keep the air trapped in the bottle and help them retain their shape so they can be correctly sorted.



**The Plastic Bottle Question:  
Caps ON or Caps OFF?**





**What to Do  
with Your Old  
X-RAYS**

The County now has a special dropoff for unwanted X-rays for residents who wish to recycle them.

When X-rays are recycled, the silver is extracted and the film is melted, ensuring patient privacy.

Where:  
**Burlington County  
Resource Recovery Complex's  
Convenience Center at  
22000 Burlington-Columbus Road  
in Florence**

Hours:  
**Monday-Friday from 7 am-5 pm  
and Saturday from 7 am-Noon**