

New Volume 3 Edition 2
THE RANCOCAS CREEK
ASSOCIATION

The New Creekside News



The "New" Creekside News is an e-newsletter for, about, and by the Rancocas Creek Association - free to all, published quarterly (**January, April, July, October**). The Creekside News was previously distributed weekly (1930's) to all residents free of charge - for the first copy - any additional copies were sold for 2 cents per copy!

Click to check us out on [Facebook](#) 
Or online at www.rancocas creek.org

Creekside News April 2019

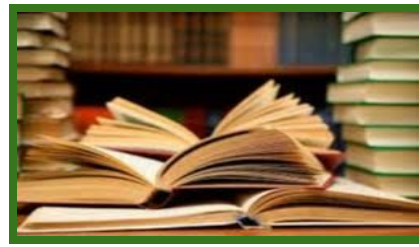
The Ornithologist Corner

Contributed by Ranger Jacob



The Great Blue Heron

Standing up to a whopping 4.5 feet tall, the Great Blue Heron is North America's largest heron. Although this large wading bird towers over other avian species found along the Rancocas Creek, they still only weigh up to a mere 6 lbs! A year-round resident in New Jersey, the Great Blue Heron will wade through the shallows of river banks, creeks, ponds, and wetlands in search of prey. They are not picky on what they attempt to eat; ranging from fish, reptiles, amphibians, small mammals, and even other birds! Breeding pairs are mostly monogamous, but will nest in communal rookeries known as "heronries". They will make their large platform nests within the canopy of forested waterways not too far from food sources. Since Great Blue Heron nestlings are altricial, the adults in the heronries hunt and feed their helpless young until they're old enough and strong enough to leave the nest. So next time you are paddling down the Rancocas, keep your eyes fixed on the water for Great Blue Herons stalking their prey, but also up in the trees for the colonies in which they raise their young.



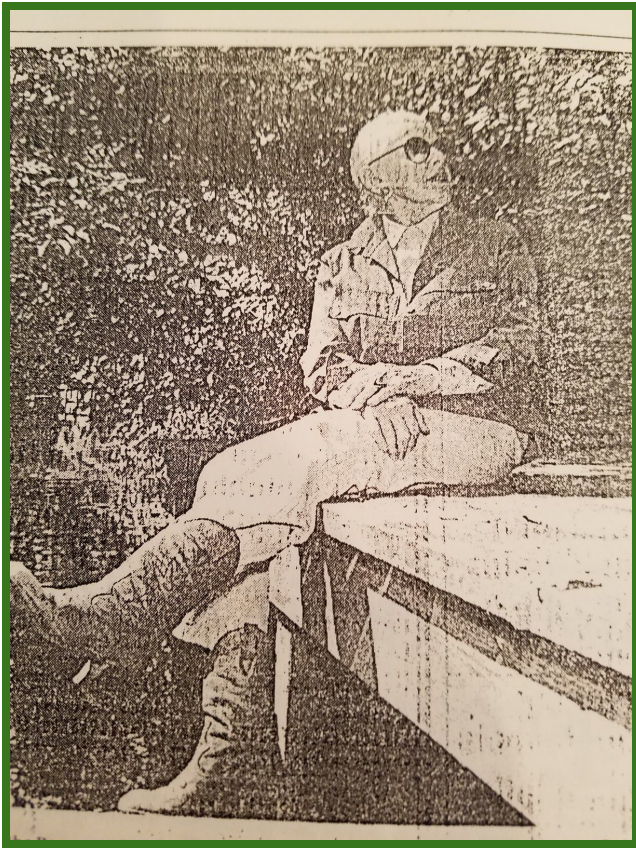
Ellie's Corner

"To me it is important not to live in a throwaway society...that you respect what came before." Eleanor Gesensway.

The banks of the Rancocas Creek has in its residents a remarkable membership of truly talented and interesting persons. Please enjoy another excerpt from Ellie's book - "An Oral History Project: Life Along the North Branch of the Rancocas Creek between Mount Holly and Smithville, New Jersey".

Beatrice (Bea) Rosenthal was a past President and long-time champion of the Rancocas Creek Association for more than 40 years. She was over 90 years old when she passed on January 22, 2000.





This photo, taken from "The Philadelphia Inquirer", September 4, 1989, highlighted Ms. Rosenthal as a founding member of the RCA and stated that she was instrumental in many of the past accomplishments of the Association. She played a major role in bringing city water to the residents along Shreve Street, Kates Tract, and Paducah Road. She was an advocate for stormwater management, bank preservation, and many other projects that remain in the forefront for the RCA.

Ms. Rosenthal moved to the area between 1925 and 1935 - by ferry. "There were a group of cottages rented by young men, college men,...young working people,... (and) a girls' cottage." "We had a ball there (Wallflower)...we had parties...having concerts and fairs."

Ms. Rosenthal's love of our neighborhood is evident - ..."you look out there when everything is in bloom - or even when it isn't - I love the starkness and the different colors in the barks. You wouldn't believe it, but it is there. Then you see the sunset here. Then you see those bushes out there. Those are local bamboo. That is not the kind of bamboo you find in Hawaii or those other places. And of course, we used to have the little ducks go down the creek with the little ducklings. The frogs used to be along the bank there. ...I love it."

There is so much more regarding Ms. Rosenthal and all her contributions to our area - a must read! Ellie's book is available for your perusal at our meetings!

A Blast from the Past!



Who is able to identify the young whipper-snapper top left?

The Spotted Lanternfly



The Spotted Lanternfly is an invasive pest that affects a good deal of our fruit and flowering trees, shrubs, and plants. They suck the sap from the stems and leave weakening the plant, leading to death.

The adult Spotted Lanternfly is about 1 inch long and ½ inch wide with large visually striking wings. The adults appear in late July with eggs hatching in the spring and early summer.



They are easiest to spot at dusk as they gather in large numbers migrating up and down the trunks and stems.

There is more information regarding the Spotted Lanternfly on our Facebook Page.

Report any findings that you suspect could be a Spotted Lanternfly so that it may be identified immediately. You may submit a picture to SLF-plantindustry@ag.nj.gov for identification. You may also contact the hotline with the sighting location, and your contact information, at the NJ Spotted Lanternfly Hotline at 1-833-223-2840 (BADBUG0). Your assistance with this eradication effort is most appreciated.



SEE IT, REPORT IT!



Spotted Lanternfly

What to do:
If you see egg masses, scrape them off, double bag and throw away.
You can also place the eggs into alcohol, bleach or hand sanitizer to kill them.


Collect a specimen:
Specimens of any life stage can be turned in to the New Jersey Department of Agriculture's lab for verification.

Take a picture:
With your GPS function turned on your smartphone or a camera with GPS, take a photograph of **ANY** life stage (including egg masses).

Submit picture to: SLF-plantindustry@ag.nj.gov

Report a site:
If you can't take a specimen or photograph, call and leave a message detailing the sighting location/address and your contact information.

NJ Spotted Lanternfly Hotline at 1-833-223-2840 (BADBUG0)

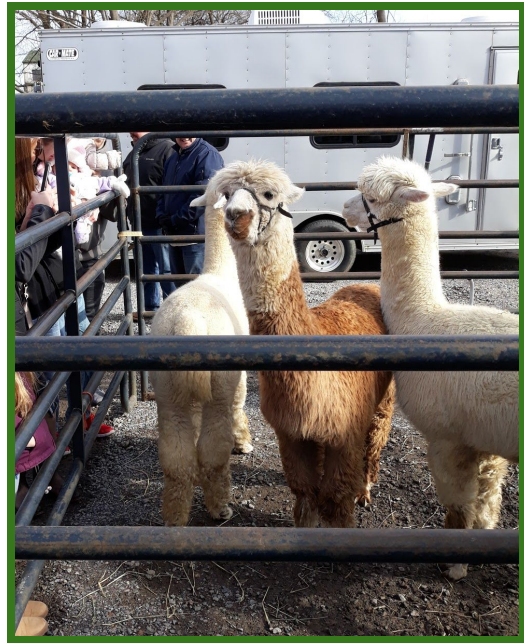


Ticks

(From The Rutgers Cooperative Research & Extension, NJ Agricultural Experiment Station, Rutgers - The State University of New Jersey - Fact Sheet FS 443)

"As long as temperatures are above freezing, black legged ticks are active the entire year. Peak activity months are May to June (nymphs), and October /November, and again in April (adults)."

The Rutgers Cooperative Research & Extension Fact Sheet is attached to this newsletter for your convenience.



There were friendly alpacas to greet you, and an exciting dog sled demonstration amongst other wonderful events.



Fire and Ice Festival

The Fire and Ice Festival on Saturday, January 26, 2019 was a great success. Filled with sounds of music, laughter and a community getting together. Ice sculptures and chili - what a mix!





Happy Birthday to Ranger Jacob - wishing you an Awesome April!

Happy Birthday to Past President Rich, Parliamentarian Kerry, and Tyler M - hoping that you have the Magnificent May!

Happy Birthday to Jenna C, Betty H, and Carly M - a Jubilant June to you!

Please let Sharon know your birth months so that you are included in our well wishes!



The RCA has a long history. It was originally a "camper's association", formed by families summering along the creek. This year we are doing a concerted effort to get substantial work efforts going to solidify our beautiful environment.

Update on the Smithville Bridge



The County believes that the opening is coming soon! Fingers crossed!

Rain, Rain, Rain



2018 saw record rainfall - and the creekside residents will certainly attest to that! Hopefully next summer will not be as wet - and that we have a chance to dry out and enjoy our beautiful homes, and relaxing waterway!

Congratulations

Congratulations to our incredible Treasurer, Tom Kempton! Tom was able to spend a great deal of time with the bank to put us 'on-line' - that saves us money each month on top of being 'green'. Because Tom was able to accomplish so much with getting us electronic, we are now able to accept donations through Amazon Smile and through Facebook. Way to go Tom!



Oh Such A Dilemma!



Which production to see?!!!

Not a problem - our very own Lord Kerry Sharps will be front and center from April 19 to June 8.

Do try to go out and support the Mill Race Theatrical Company. So many local eateries to complete the day - including Lord Sharps favorite Vincent's Homemade Ice Cream!

See you there!

Upcoming Projects

This past year was rough on the trees and the creek. The RCA will be looking into ways to assist with tree removal services.

To that purpose, anyone that can, or knows someone that is interested in volunteering to work with Sharon to get quotes and promote fundraisers, research grants, etc. **please let us know.**



We are gearing up for a productive and exciting year - please come out and support your association!

You will note that we have added Saturdays to our line-up! Many of our members had stated that Sundays were becoming difficult; therefore, we have added two Saturdays to see if this will assist with scheduling. We hope this helps!

Dues



Dues remain at \$20 per household! Please forward your dues to our Treasurer, Tom Kempton.

You may mail them to the RCA at 36 West Railroad Avenue, Eastampton NJ 08060.

We will consider electronic payments for the future if that would be a preference for our membership!

Our Newsletter

Anyone interested in writing an article for our newsletter, or have news that they would like to share, should contact Sharon Astorino, Teri Montgomery, or Claudia McNamara. You may use our personal

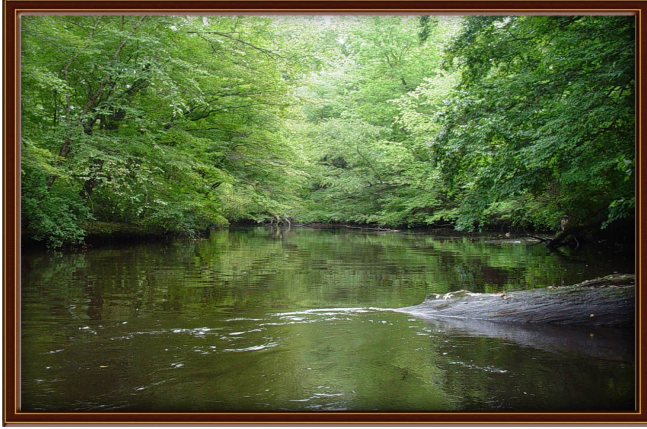
emails or our WebMaster will forward mail to us that is sent to Rancocas@gmail.com.

For those of you who read this newsletter and are not members of the RCA, we would like to tell you what it is! The Rancocas Creek Association is resident's association for people who live on or near the Creek between the Smithville Spillway and the Mount Holly Dam. We are a non-profit organization. Although RCA is not primarily an environmental organization, our location and relationship to the Creek means that many issues that we take up on behalf of residents have to do with preserving the quality of the environment and ecology of the Creek.

We welcome new members!

The more subscribed members we have, the stronger our voice to protect our environment and neighborhood and the quality of all lives along it. Dues are \$20 per year per household - not a high price to support an association that looks out for our small community and is also a source of information about local activities and development. So come on in! Join up and be part of this not-for-profit neighborhood association!

To join, simply mail your dues along with your name, address, email and telephone number to RCA at 36 West Railroad Avenue, Eastampton NJ 08060. We look forward to hearing from you and working together for a beautiful, clean creek!



President: Sharon Astorino
Vice President: Richard Astorino
Secretaries: Judy Loane
Claudia McNamara
Treasurer: Tom Kempton
Parliamentarian: Kerry Sharps
Editors: Sharon Astorino
Claudia McNamara
Teri Montgomery
Webmaster: Kerry Sharps